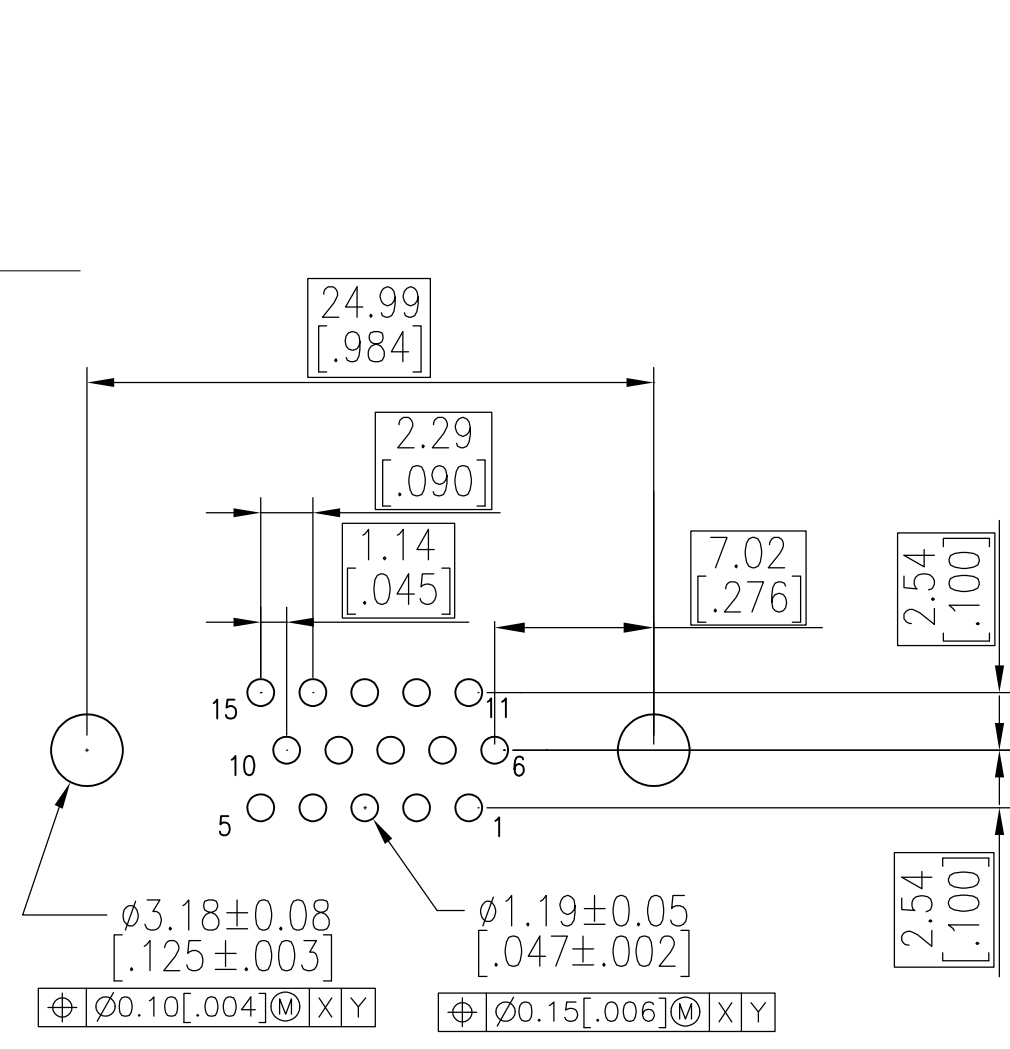
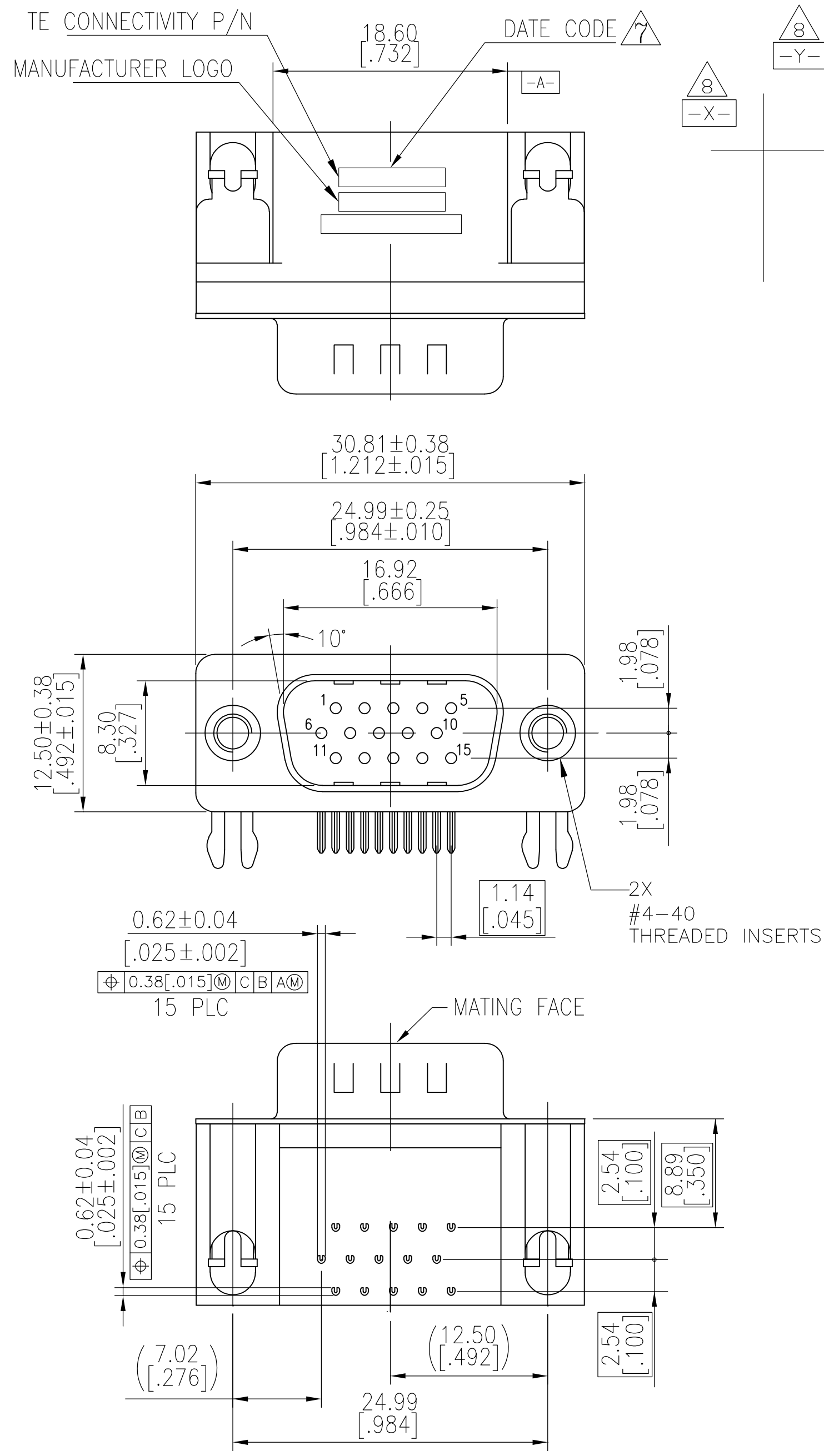
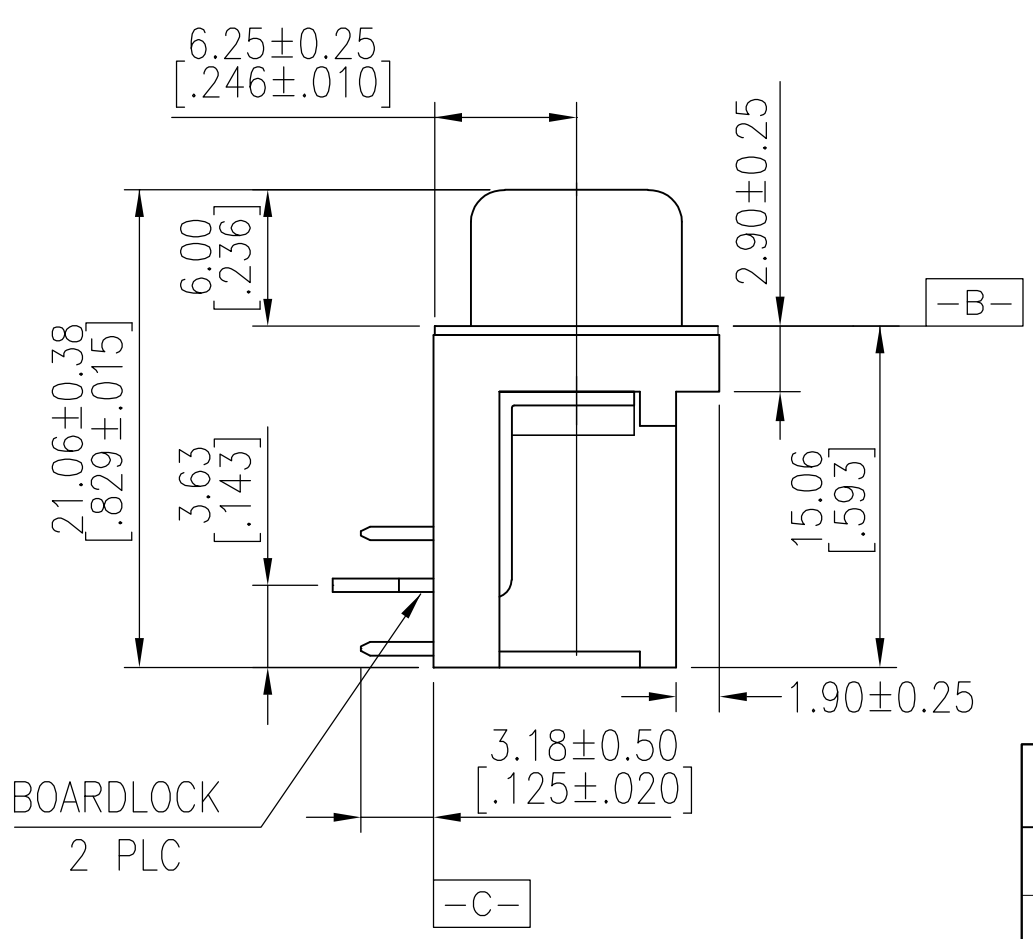


THIS DRAWING IS UNPUBLISHED. RELEASED FOR PUBLICATION  
 © COPYRIGHT - By - ALL RIGHTS RESERVED.

LOC		DIST		REVISIONS			
P	LTR	DESCRIPTION		DATE	DWN	APVD	
GP	00	D3	REVISED PER ECO-15-011151	14DEC2015	AP	DG	



RECOMMENDED PCB LAYOUT



1. HOUSING MATERIAL: PBT, GLASS FILLED, BLACK, UL 94V-0 RATED.
2. CONTACT MATERIAL: PHOSPHOR BRONZE.
3. CONTACT FINISH: GOLD PLATE IN MATING AREA (SEE TABLE), 120 $\mu$ " MIN TIN PLATE ON SOLDER TAIL, BOTH OVER 50 $\mu$ " MIN NICKEL UNDERPLATE.
4. SHELL: STEEL, NICKEL PLATE.
5. BOARDLOCK: BRASS, 100 $\mu$ " MIN TIN PLATE.
6. THREADED INSERTS: BRASS, NICKEL PLATE.

$\triangle 7$  FOUR DIGIT DATE CODE IN THIS FORMAT.  
 Year 01 45 Manufacturing Week

$\triangle 8$  DATUMS  $-X-$  &  $-Y-$  TO BE ESTABLISHED BY CUSTOMER.

OBSOLETE	Gold Flash	5749767-3
OBSOLETE	15 $\mu$ " MIN	<del>5749767-2</del>
	30 $\mu$ " MIN	5749767-1
	CONTACT MATING AREA FINISH	PART NUMBER

THIS DRAWING IS A CONTROLLED DOCUMENT.		DWN J.GERACE 22FEB06	TE Connectivity AMPLIMITE HD-22 15 POS PLUG, RIGHT ANGLE	
DIMENSIONS: mm [INCHES]		CHK S.BOLASH 22FEB06		
TOLERANCES UNLESS OTHERWISE SPECIFIED:		APVD M.WALMSLEY 22FEB06	NAME	
0 PLC $\pm$ -		PRODUCT SPEC	108-1092	
1 PLC $\pm$ 0.38 [.015]		APPLICATION SPEC	114-13198	
2 PLC $\pm$ 0.25 [.010]		WEIGHT	-	
3 PLC $\pm$ 0.15 [.006]		SCALE	A2 00779 C=5749767	
4 PLC $\pm$ -		CUSTOMER DRAWING	SCALE 3:1 SHEET 1 OF 1 REV D3	
ANGLES $\pm$ 2'				
FINISH				
SEE NOTES				